

3rd Azemmour theme Ostroda 2015



Definition:

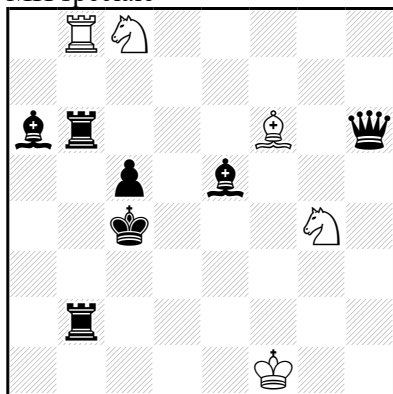
In a first phase of a 2,5-3 helpmate, a white figure A, which makes the white first move, must mate in the second phase. Furthermore, in the second phase, a white figure B, which makes the first move, will mate in the first phase. The idea can be showed in a cyclic form.

Conditions:

- 1) the A and B figures must play on different squares in the two phases. (No exchange of white moves)
- 2) A and B figures cannot be captured (No Zilahi).
- 3) A and B figures must not play the second white moves (other white figures should participate in the second moves).

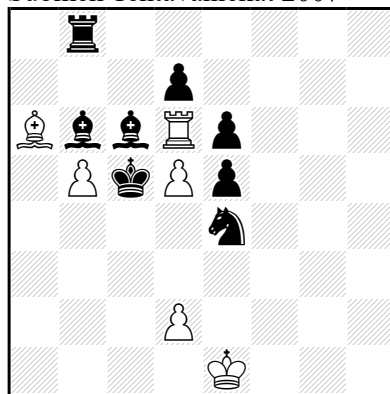
Examples:

I- Abdelaziz Onkoud
idee & form 2012
MH spéciale



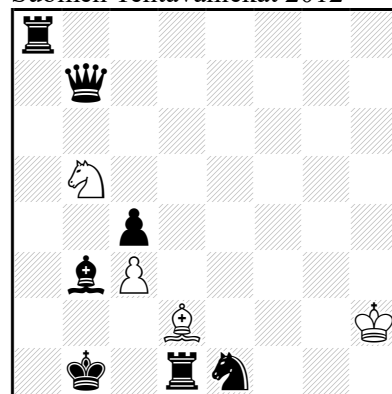
h≠2,5 2 solutions 5+7

II- Abdelaziz Onkoud
Suomen Tehtävänäikat 2007



h≠2,5 b) ♖d2→a3 6+8

III- Abdelaziz Onkoud
Suomen Tehtävänäikat 2012



h≠3 2 solutions 4+7

- II-a) 1... ♗b×c6 (A) 2. ♔d4 ♙d3 3. ♜c5 ♗×e6♯ (B)
 b) 1... ♗d×c6 (B) 2. ♔c4 ♜d3 3. ♙c5 ♗b6♯ (A)
 III-1. ♜a1 ♙c1 (A) 2. ♜d4 ♗×d4 3. ♔a2 ♘c3♯ (B)
 1. ♔a1 ♘a3 (B) 2. ♜b4 ♗×b4 3. ♙a2 ♙c3♯ (A)